

FUNCTIONS AT
DOCKSIDE

RESTAURANT & BAR

DOCKSIDE

OLIVIA MELHOP PHOTOGRAPHY



TABLE OF CONTENTS

A LITTLE HISTORY	05
YOUR NEXT EVENT AT DOCKSIDE	06
LAYOUT	07
FLOOR PLANS	08
MENU OPTIONS	10
CONTACT US	14

WELCOME TO DOCKSIDE

Dockside offers versatile waterfront spaces ideal for corporate functions of all sizes, from private board dinners to large standing receptions. With exceptional food, a dedicated Functions Team, and stunning harbour views, we provide a seamless and professional experience for your event.





A LITTLE HISTORY

Dockside Restaurant & Bar was established in 1991 in this historic wooden building known as Shed 3. The history of our beautiful building dates back to 1887 and is now listed as a heritage site by Wellington City Council. We are lucky enough to have one of the oldest examples of a building fundamental to operating Wellington's wharves. Originally a single-story warehouse, a second story was added in the 20th century for Harbour Board tugboat staff. Timber buildings like this one once lined the wharves and jetties between Taranaki Street and Pipitea Wharf. Now, Shed 3 is one of the last remaining few.

YOUR NEXT EVENT AT DOCKSIDE

Set against the stunning backdrop of the waterfront, Dockside offers a unique alfresco-style venue ideal for corporate functions and private events. Whether you're planning an intimate team dinner or a large-scale celebration, our Upstairs Restaurant and Main Deck each provide flexible spaces with impressive harbour views.

Our dedicated Functions Manager will work with you every step of the way, from initial planning through to execution. We can assist with event styling, AV requirements, entertainment, and tailored menu design, ensuring your event runs seamlessly and leaves a lasting impression on your guests.

At Dockside, we believe in complete transparency, with no hidden costs. Your primary investment is in food and beverages, with a straightforward minimum spend and deposit structure. The deposit is deducted from your final bill, and minimum spends vary depending on the date and event requirements.

Included within your spend are all tables and chairs, cutlery, glassware, white linen tablecloths and napkins, along with full setup, pack down, and professional service staff. Our team ensures every detail is taken care of, allowing you to focus on hosting your guests.

Let us help you create a professional, polished event in one of Wellington's most iconic waterfront locations.

OUR SPACE

Dockside offers two versatile event spaces, both showcasing Wellington's waterfront.

Our downstairs Main Deck features expansive harbour views, large bifold doors, and a retractable roof for a flexible indoor-outdoor setting.

Upstairs, our more intimate restaurant space includes a private bar, two balconies, and elevated city and harbour views, ideal for smaller or more exclusive events.

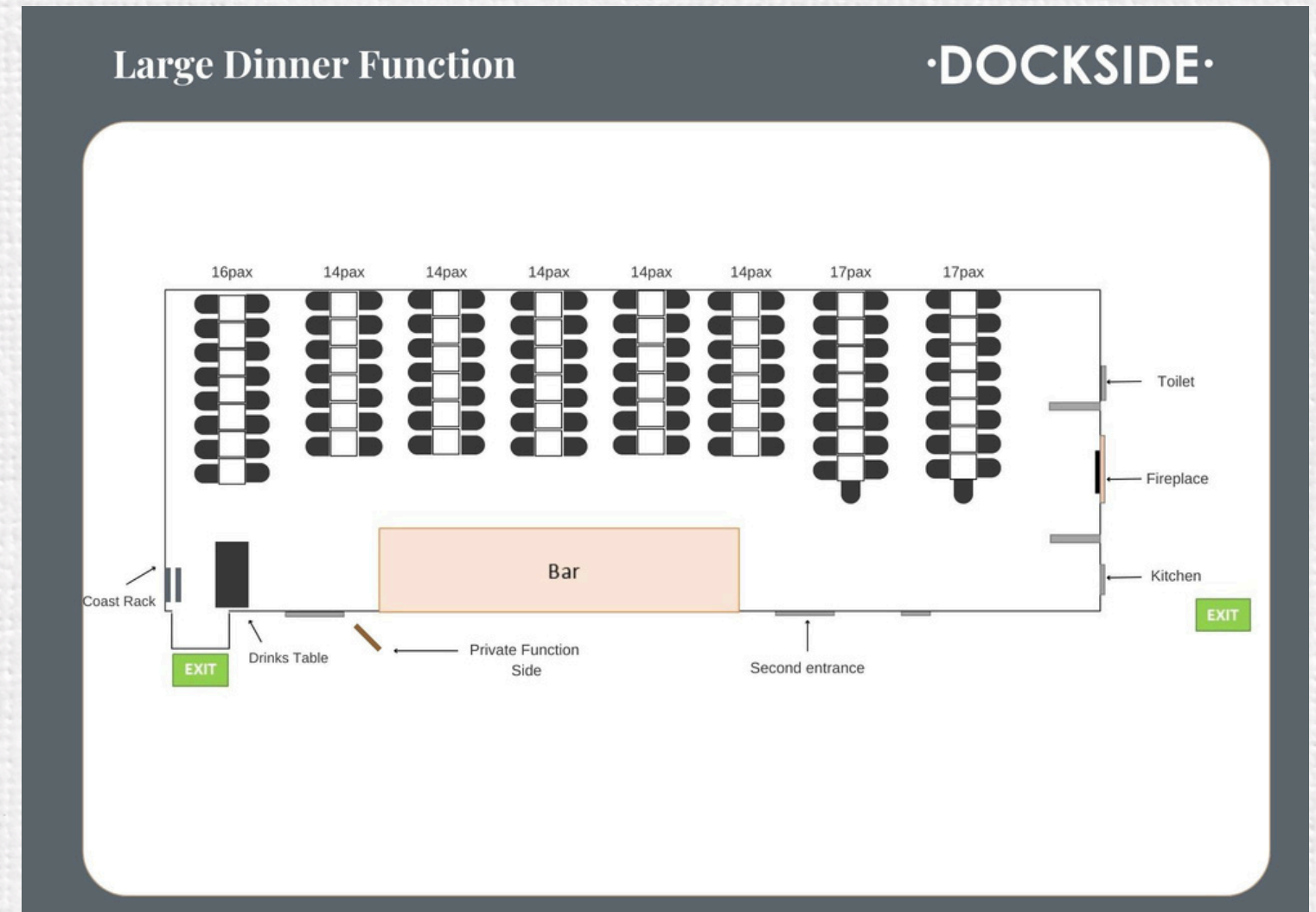
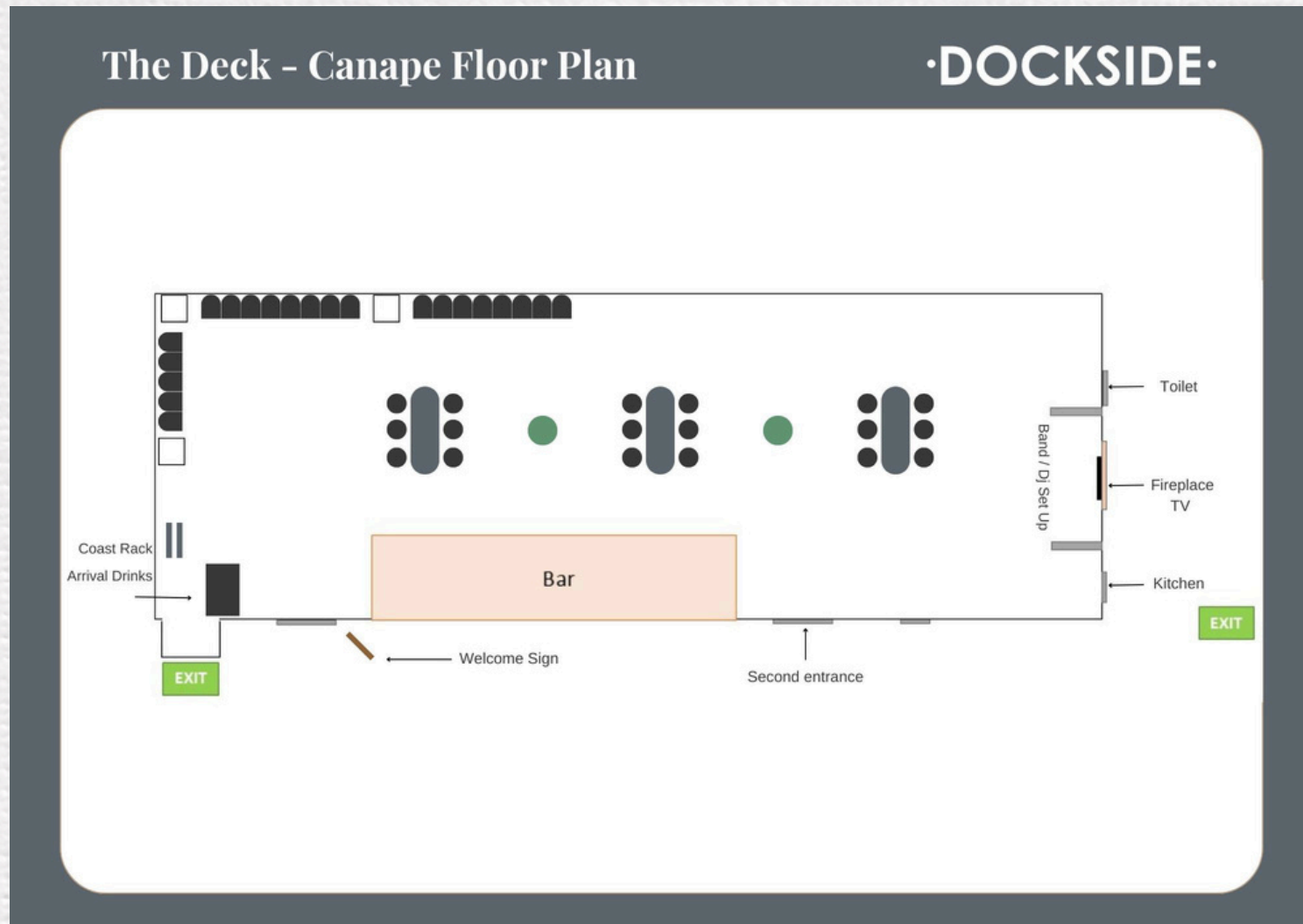
Both spaces can be tailored to suit seated dining or cocktail-style functions, with capacity for up to 120 guests seated or 300 standing.

For larger events, guests can move seamlessly between spaces, with our team managing all setup and pack down to ensure a smooth experience.

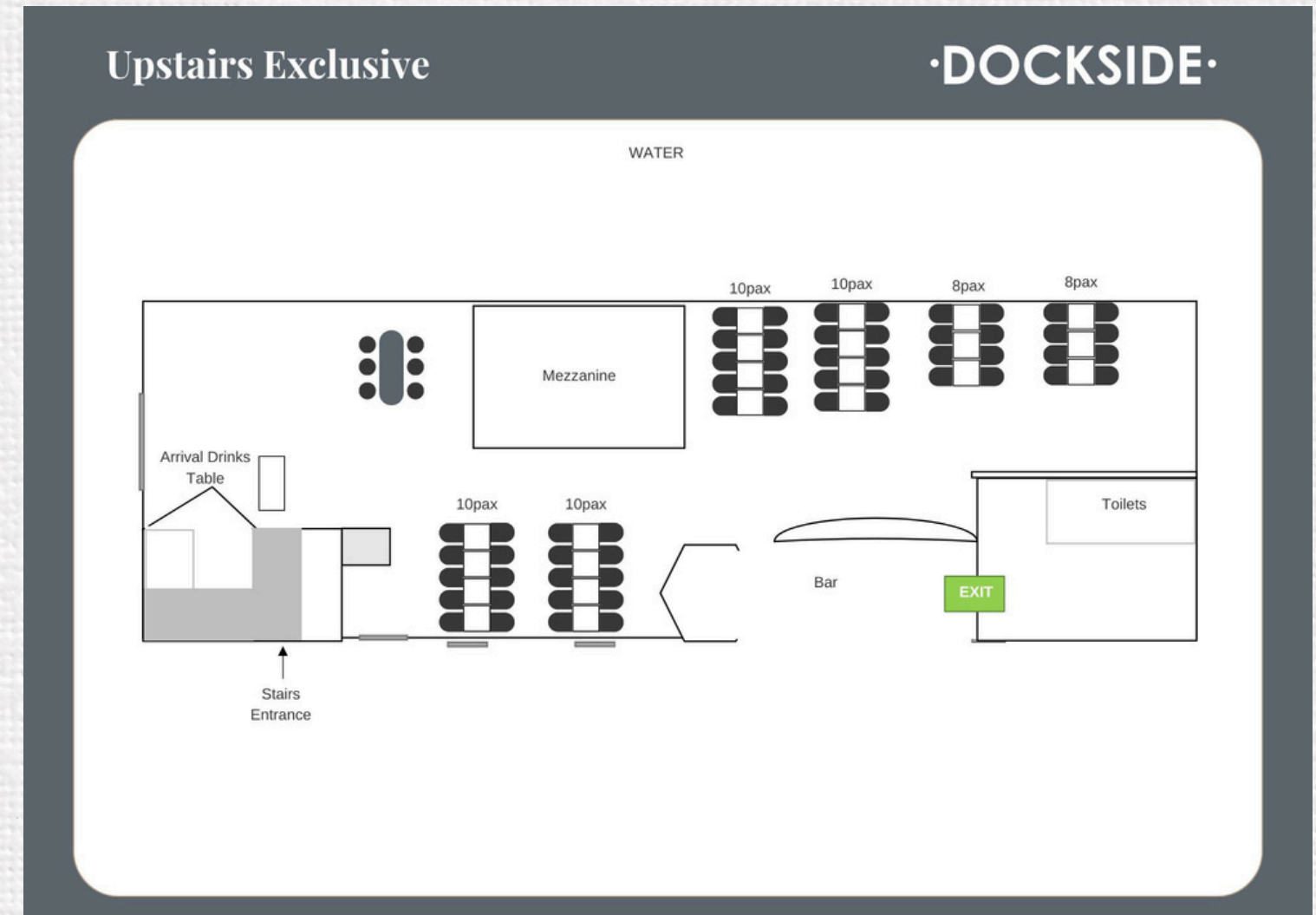
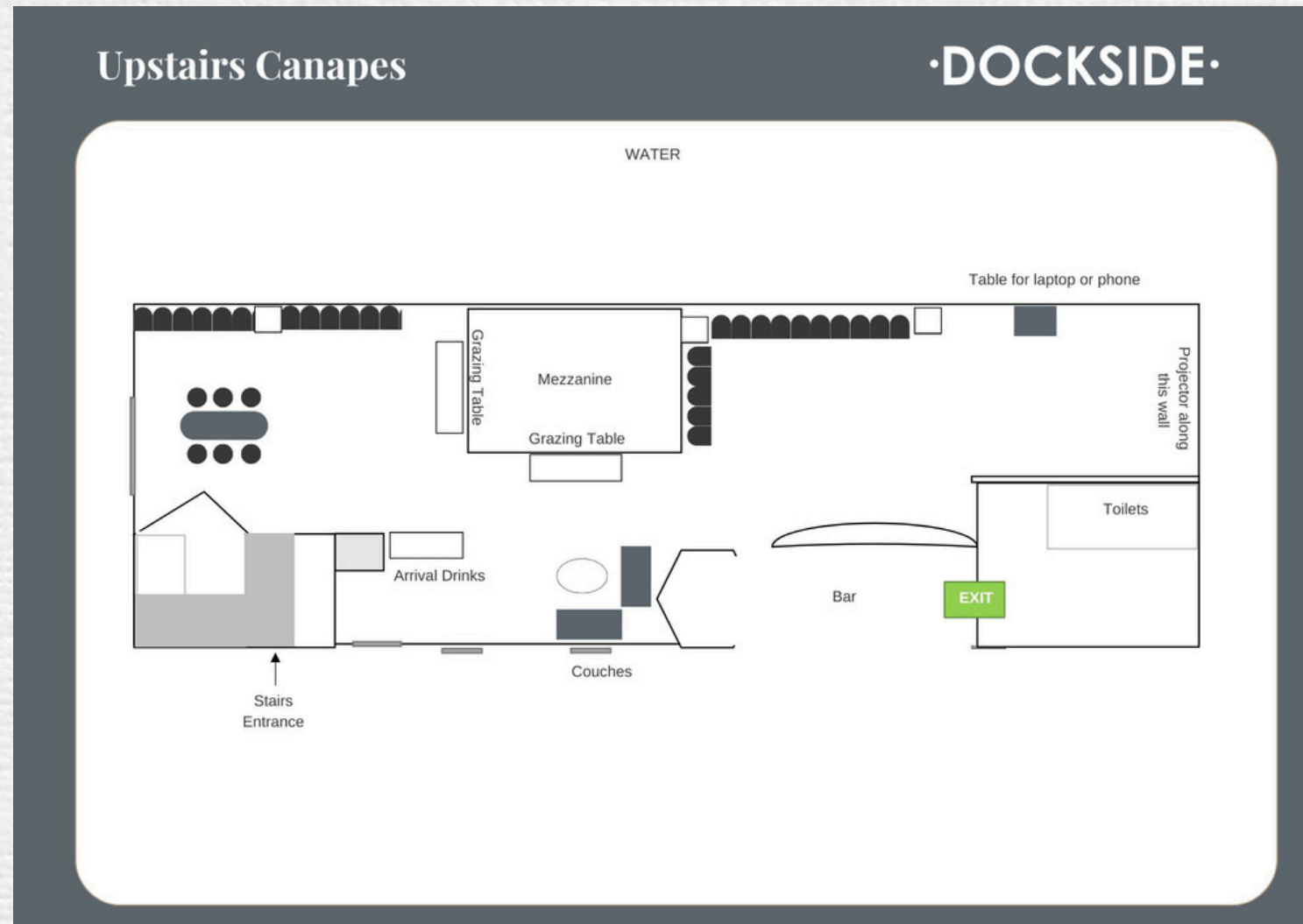
We also offer flexibility with styling, allowing you to bring your own branding or décor, with complimentary setup and pack down included.



MAIN DECK



UPSTAIRS RESTAURANT



MENU OPTIONS

We have a large range of menus focusing on the best of what New Zealand has to offer. Our menus change with the seasons as our Chefs place emphasis on the best, freshest produce from the best local suppliers.

Please visit our website www.dockside.co.nz to see our most up to date copy of the following menus.

Canapés \$24-\$42pp

We have a fantastic selection of bite sized canapés and platters ranging from hot to cold, with both sweet & savoury options, they are perfect for any special occasion.

Buffet \$89pp

Our buffet menu includes 3 courses. Canapes walked around for your guests to start, buffet-style main & sides, and petit fours for dessert!

Set Menus \$74-\$104pp

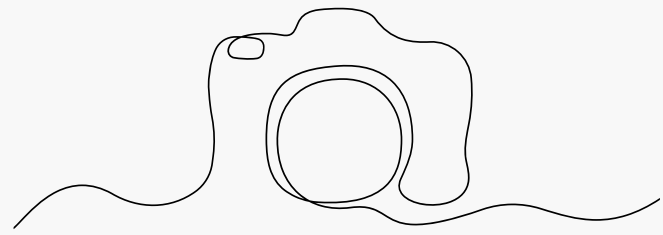
Our set menus are ordered on the day and served as individually plated courses. Two course options are \$74pp for main and dessert, or \$82pp for entrée and main. Our three course set menu is \$104pp and includes an entrée, main, and dessert per person.

All pricing and offerings are subject to change.

EXECUTIVE CHEF
MARIE PENNY



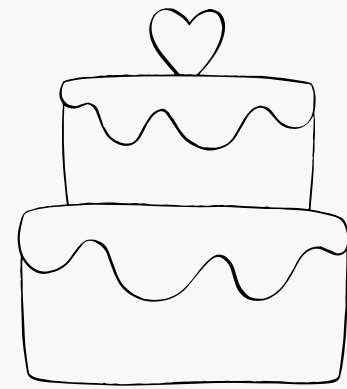
OUR FAVOURITE VENDORS



PATINA PHOTO + VIDEO
<https://www.patina.photo/>

WESLEY JONSON PHOTOGRAPHY
<https://wesleyjohnsonphotography.com/>

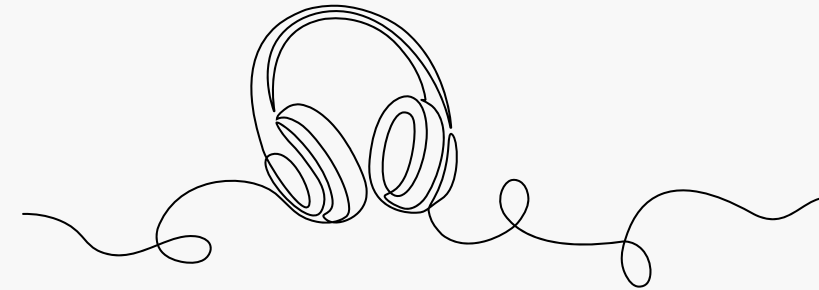
LUCAS WINTERS
<https://lucaswinters.co/>



STILETTO STUDIO
<https://www.stilettostudio.co.nz/>

MANAIA CAKES
info@manaiacakes.com

LITTEL BEACH KITCHEN
<https://www.littlebeachkitchen.com/>



DJ 4 YOU
<https://dj4you.co.nz/>

UNCLE MONKEY
<https://www.unclemonkey.com/>

CARL WEBLEY
<https://www.carlos.co.nz/>



LITTLE LACE FLOWER COMPANY
<https://www.littlelaceflowercompany.co.nz/>

JULIETTE FLORIST
<https://www.julietteflorist.co.nz/>

CONTACT US

EMAIL US AT MANAGER@DOCKSIDE.CO.NZ
TO MAKE AN APPOINTMENT WITH OUR IN
HOUSE EVENTS PLANNER, WHO WILL GIVE
YOU A TOUR OF OUR BEAUTIFUL BUILDING
& DISCUSS HOW WE CAN HELP YOU PLAN
YOUR NEXT EVENT!

SPECIAL THANKS

WE WOULD LIKE TO EXTEND A SPECIAL THANK
YOU TO OLIVIA MELHOP PHOTOGRAPHY
FOR KINDLY ALLOWING US TO SHARE HER
BEAUTIFUL IMAGES! HER WORK CAPTURES THE
ATMOSPHERE, EMOTION, AND DETAIL OF EACH
CELEBRATION SO EFFORTLESSLY, AND WE'RE
INCREDIBLY GRATEFUL TO SHOWCASE HER WORK.
[HTTPS://WWW.OLIVIAMELHOP.COM/](https://www.oliviamelhop.com/)

