

WEDDINGS BY

# DOCKSIDE

RESTAURANT & BAR

OLIVIA MELHOP PHOTOGRAPHY





*Summer + Shane*

# TABLE OF CONTENTS

A LITTLE HISTORY	05
YOUR DREAM WEDDING	06
LAYOUT	08
FLOOR PLANS	09
MENU OPTIONS	12
CONTACT US	14

# THANK YOU

Thank you for considering Dockside Restaurant & Bar as the venue for your upcoming event. With over 30 years of experience hosting a wide range of functions, from corporate gatherings to private celebrations, our team is dedicated to delivering seamless and memorable experiences.

Our experienced Functions Manager will work closely with you from the initial enquiry through to the day of your event, ensuring every detail is carefully planned and executed.

Located on Wellington's waterfront, Dockside offers one of the largest overwater dining spaces in the Southern Hemisphere. Our versatile venue combines the atmosphere of al fresco dining with the comfort of a fully covered space, featuring a retractable roof to suit Wellington's ever-changing weather.





# A LITTLE HISTORY

Dockside Restaurant & Bar was established in 1991 in this historic wooden building known as Shed 3. The history of our beautiful building dates back to 1887 and is now listed as a heritage site by Wellington City Council. We are lucky enough to have one of the oldest examples of a building fundamental to operating Wellington's wharves. Originally a single-story warehouse, a second story was added in the 20th century for Harbour Board tugboat staff. Timber buildings like this one once lined the wharves and jetties between Taranaki Street and Pipitea Wharf. Now, Shed 3 is one of the last remaining few.

# YOUR NEXT EVENT AT DOCKSIDE

Set against the stunning backdrop of the waterfront, Dockside offers a unique alfresco-style venue ideal for corporate functions and private events. Whether you're planning an intimate team dinner or a large-scale celebration, our Upstairs Restaurant and Main Deck each provide flexible spaces with impressive harbour views.

Our dedicated Functions Manager will work with you every step of the way, from initial planning through to execution. We can assist with event styling, AV requirements, entertainment, and tailored menu design, ensuring your event runs seamlessly and leaves a lasting impression on your guests.

At Dockside, we believe in complete transparency, with no hidden costs. Your primary investment is in food and beverages, with a straightforward minimum spend and deposit structure. The deposit is deducted from your final bill, and minimum spends vary depending on the date and event requirements.

Included within your spend are all tables and chairs, cutlery, glassware, white linen tablecloths and napkins, along with full setup, pack down, and professional service staff. Our team ensures every detail is taken care of, allowing you to focus on hosting your guests.

Let us help you create a professional, polished event in one of Wellington's most iconic waterfront locations.

# SIGNAGE

Make a beautiful first impression with our elegant white acrylic welcome signs.

Personalised just for your wedding day! Each sign is crafted with precision vinyl lettering on a durable A2 acrylic board, perfect for welcoming your guests in style.

Choose the design level that suits your style and budget:

## Basic Sign – \$60

Simple and timeless – your names and wedding date in clean, classic vinyl lettering.

## Light Illustration Sign – \$75

Includes subtle, delicate floral or decorative vinyl details to enhance the design with a soft, elegant touch.

## Detailed Illustration Sign – \$90

For those who want intricate floral cutouts and finer vinyl artwork, adding a sophisticated and artistic flair.

Please note: The acrylic boards are reusable and remain the property of [Dockside 2009 Ltd.]. If you wish to take the board home as a keepsake, this can be arranged for an additional \$60.

Let us help make your entrance unforgettable with a sign that perfectly welcomes your guests and complements your wedding aesthetic.



# OUR SPACE

Dockside offers two versatile event spaces, both showcasing Wellington's waterfront.

Our downstairs Main Deck features expansive harbour views, large bifold doors, and a retractable roof for a flexible indoor-outdoor setting.

Upstairs, our more intimate restaurant space includes a private bar, two balconies, and elevated city and harbour views, ideal for smaller or more exclusive events.

Both spaces can be tailored to suit seated dining or cocktail-style functions, with capacity for up to 120 guests seated or 300 standing.

For larger events, guests can move seamlessly between spaces, with our team managing all setup and pack down to ensure a smooth experience.

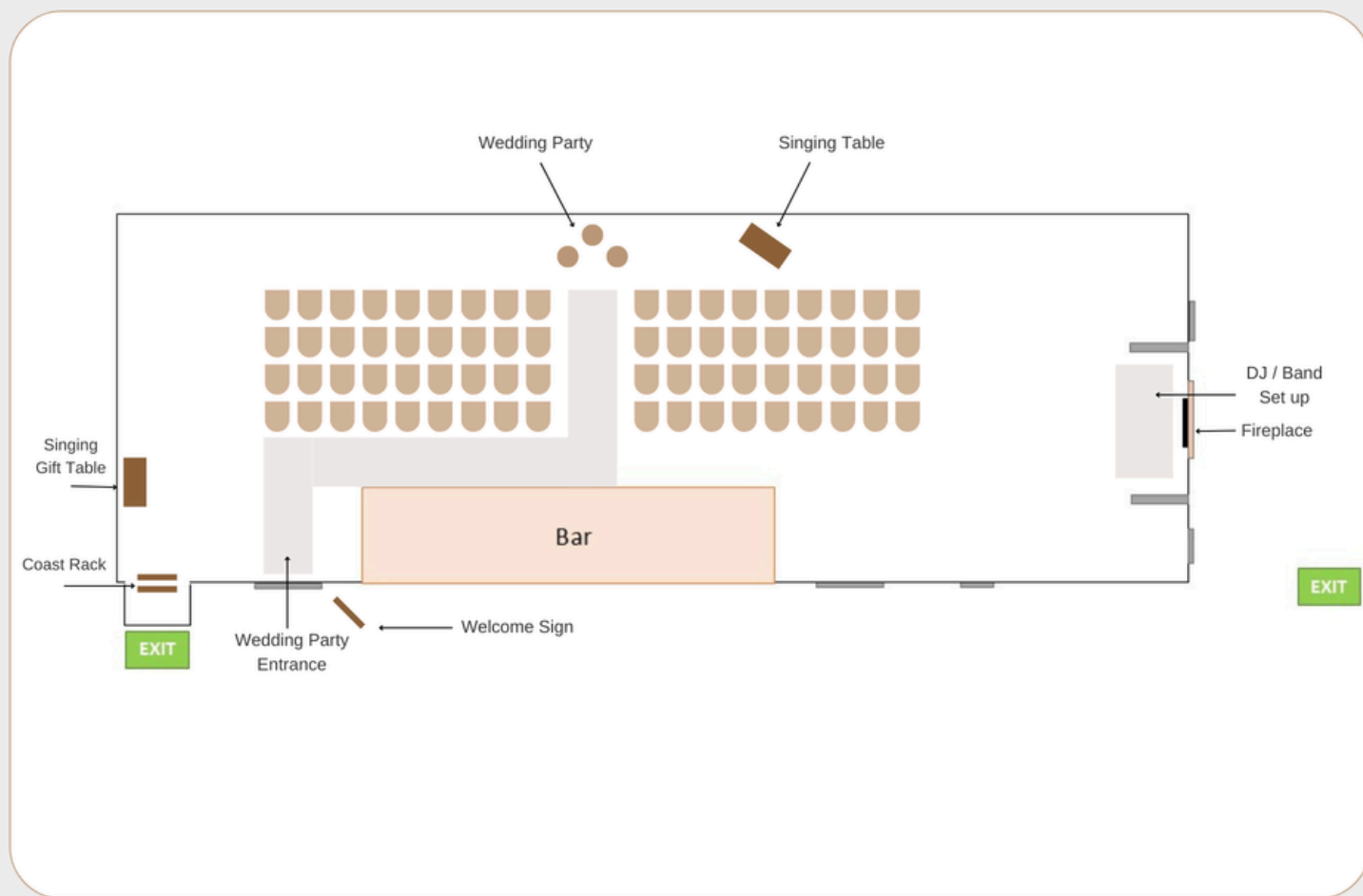
We also offer flexibility with styling, allowing you to bring your own branding or décor, with complimentary setup and pack down included.



# MAIN DECK | CEREMONY

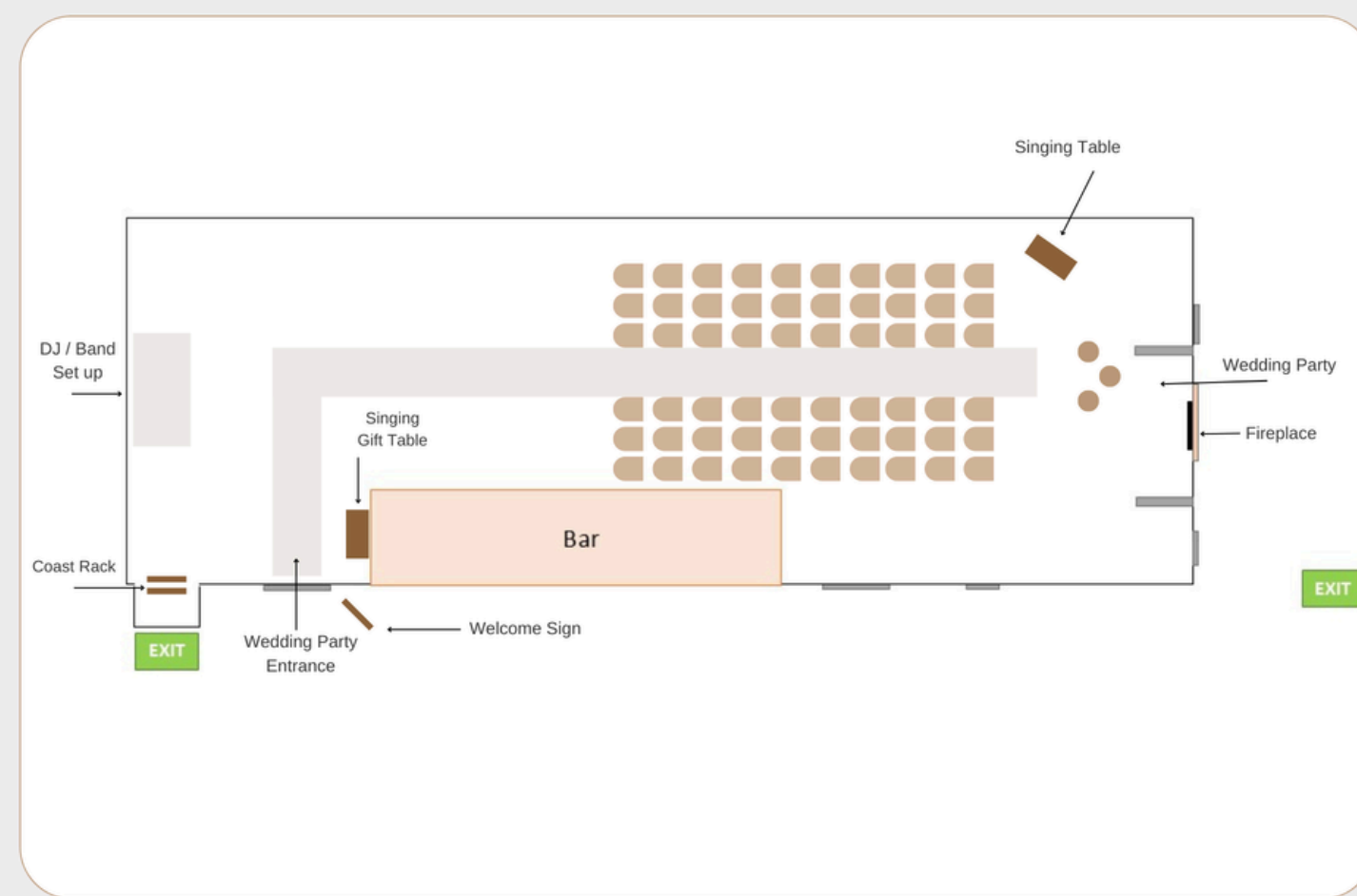
CEREMONY FLOOR PLAN

·DOCKSIDE·



CEREMONY FLOOR PLAN

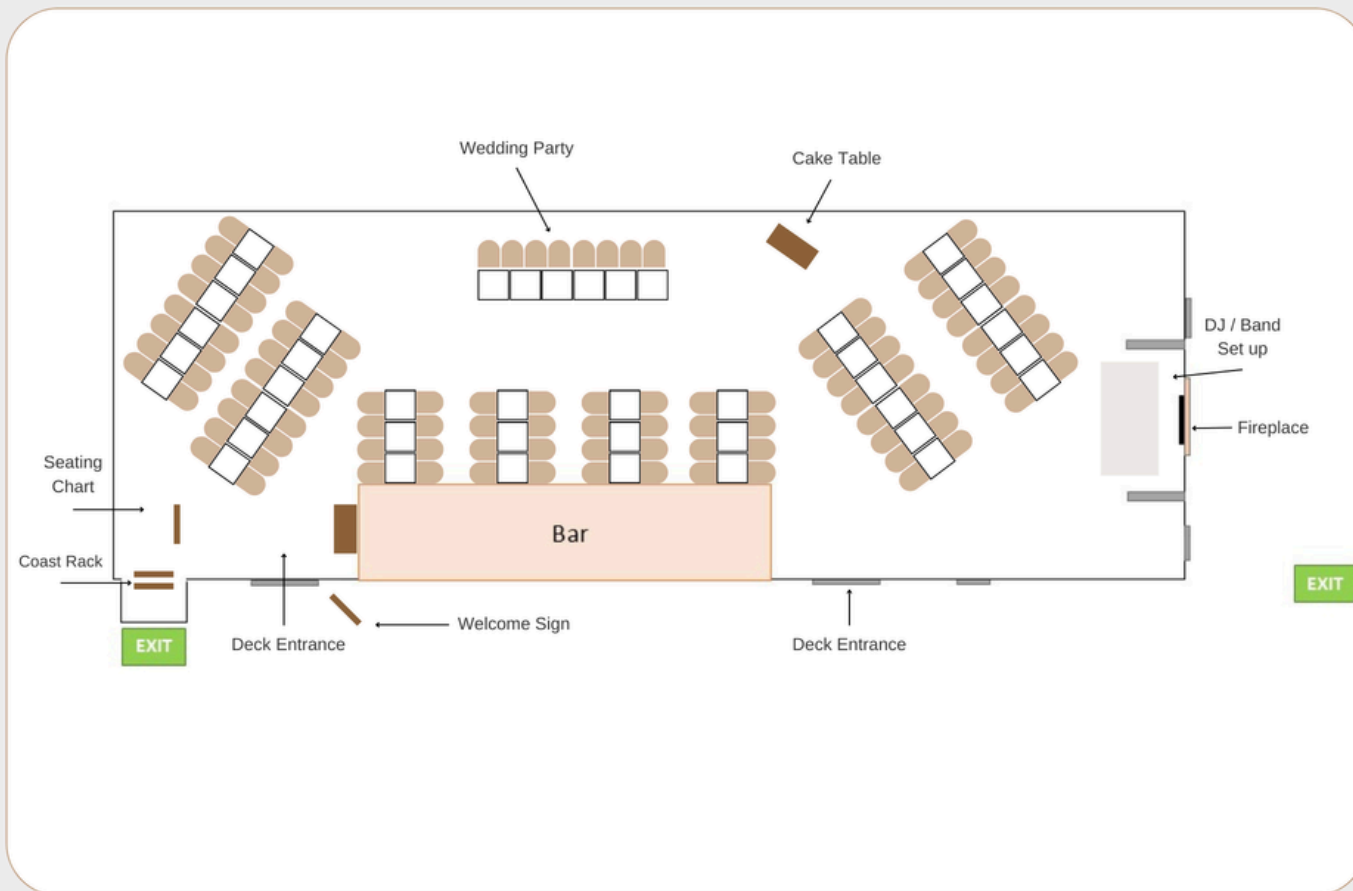
·DOCKSIDE·



# MAIN DECK | RECEPTION

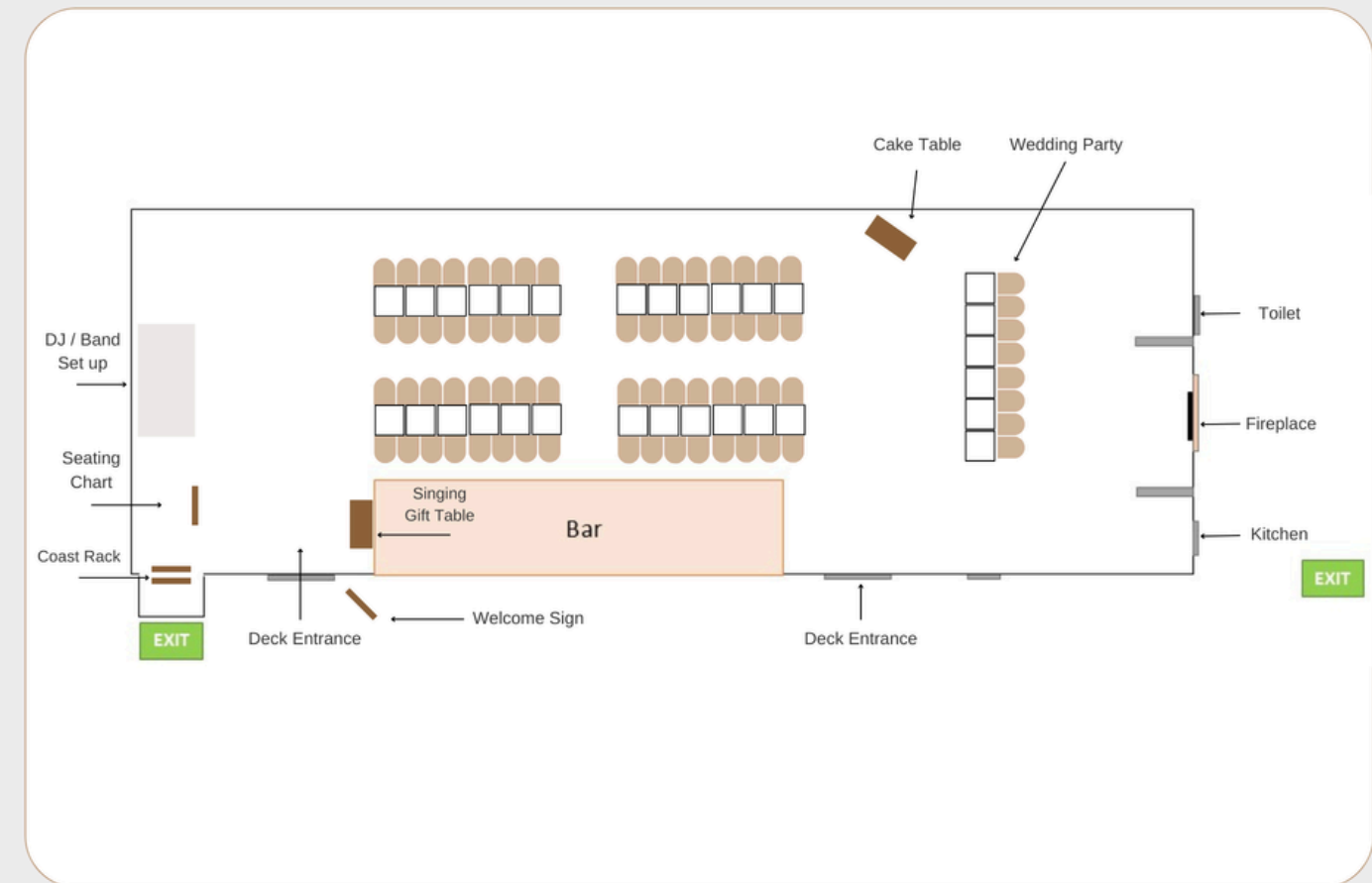
RECEPTION FLOOR PLAN

·DOCKSIDE·



RECEPTION FLOOR PLAN

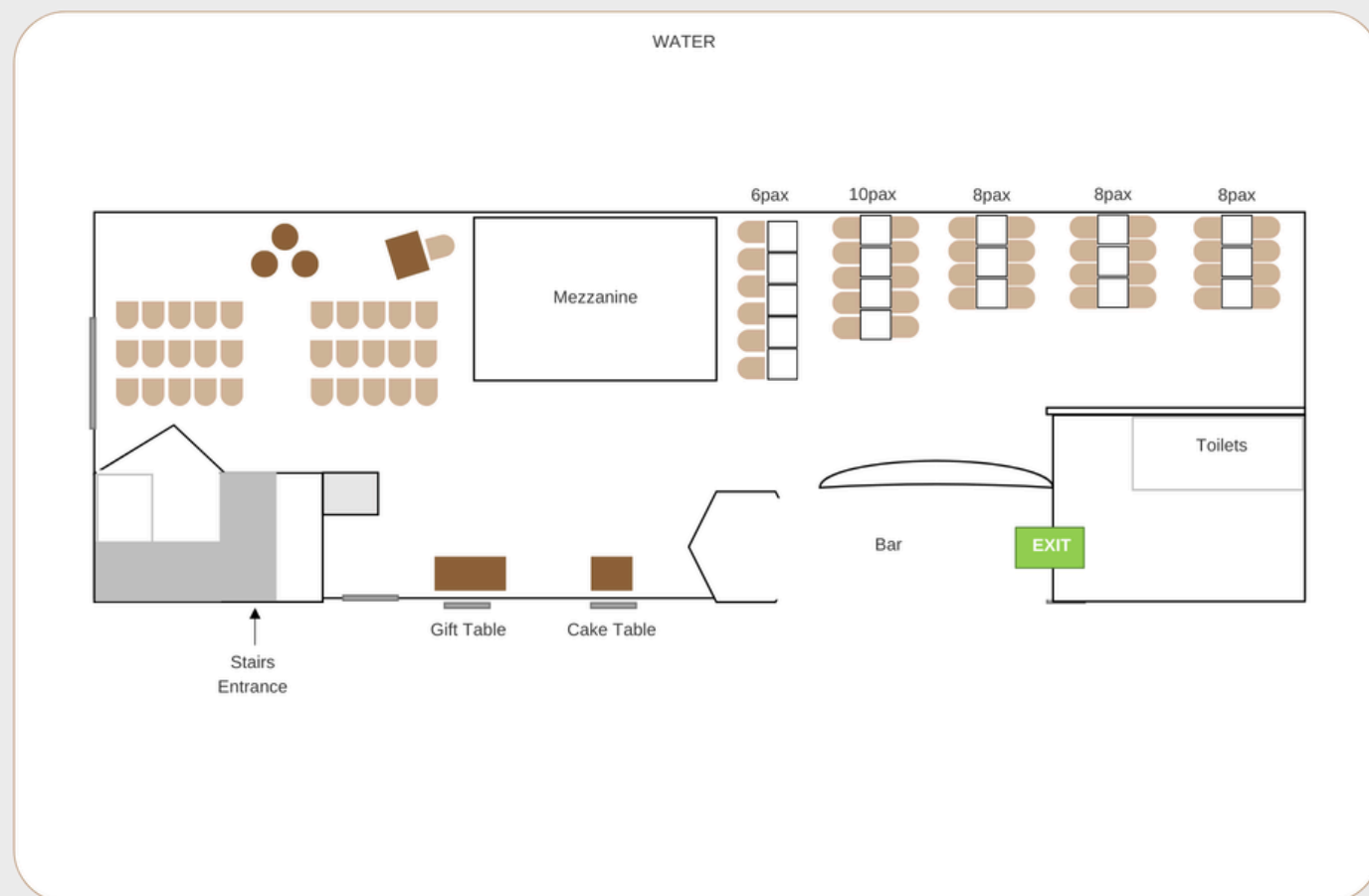
·DOCKSIDE·



# UPSTAIRS | CEREMONY + RECEPTION

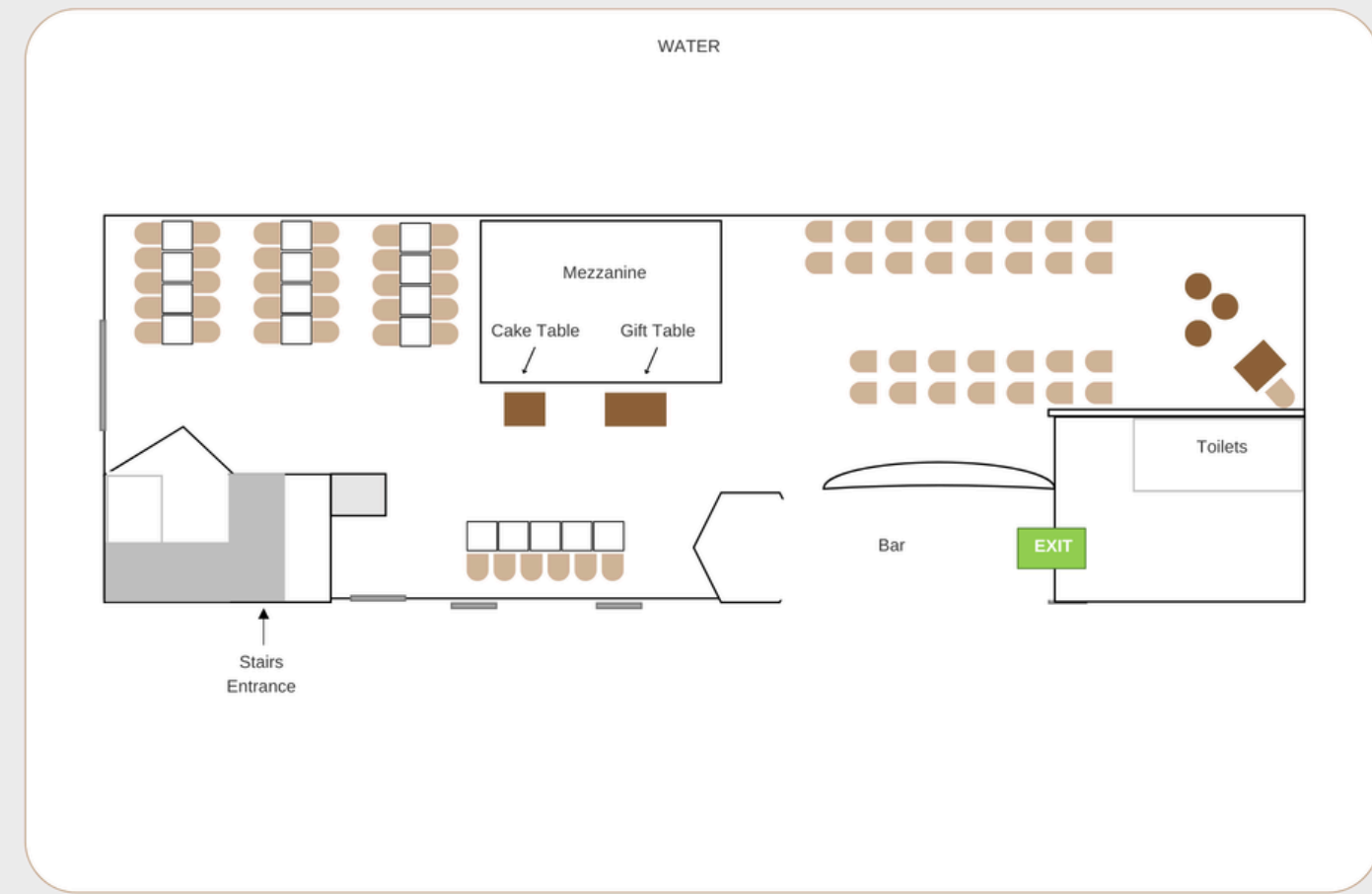
CEREMONY + RECEPTION

·DOCKSIDE·



CEREMONY + RECEPTION

·DOCKSIDE·



# MENU OPTIONS

We have a large range of menus focusing on the best of what New Zealand has to offer. Our menus change with the seasons as our Chefs place emphasis on the best, freshest produce from the best local suppliers.

Please visit our website [www.dockside.co.nz](http://www.dockside.co.nz) to see our most up to date copy of the following menus.

## Canapés \$24-\$42pp

We have a fantastic selection of bite sized canapés and platters ranging from hot to cold, with both sweet & savoury options, they are perfect for any special occasion.

## Buffet \$89pp

Our buffet menu includes 3 courses. Canapes walked around for your guests to start, buffet-style main & sides, and petit fours for dessert!

## Set Menus \$74-\$104pp

Our set menus are ordered on the day and served as individually plated courses. Two course options are \$74pp for main and dessert, or \$82pp for entrée and main. Our three course set menu is \$104pp and includes an entrée, main, and dessert per person.

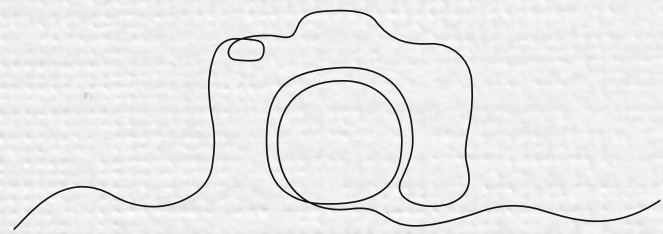
All pricing and offerings are subject to change.

EXECUTIVE CHEF  
MARIE PENNY

---



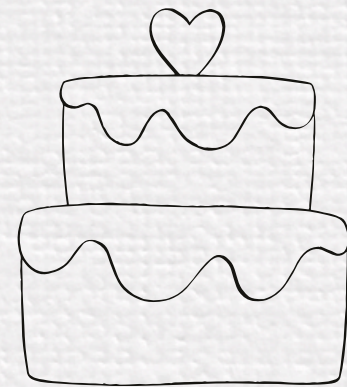
# OUR FAVOURITE VENDORS



OLIVIA MELHOP PHOTOGRAPHY  
<https://www.patina.photo/>

WESLEY JOHNSON PHOTOGRAPHY  
<https://wesleyjohnsonphotography.com/>

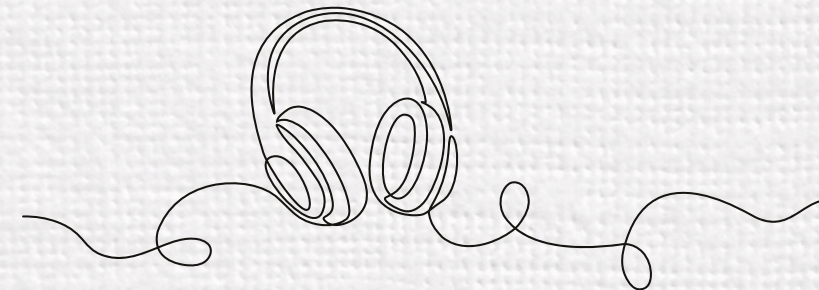
LUCAS WINTERS  
<https://lucaswinters.co/>



STILETTO STUDIO  
<https://www.stilettostudio.co.nz/>

MANAIA CAKES  
[info@manaiacakes.com](mailto:info@manaiacakes.com)

LITTEL BEACH KITCHEN  
<https://www.littlebeachkitchen.com/>



DJ 4 YOU  
<https://dj4you.co.nz/>

UNCLE MONKEY  
<https://www.unclemonkey.com/>

CARL WEBLEY  
<https://www.carlos.co.nz/>



LITTLE LACE FLOWER COMPANY  
<https://www.littlelaceflowercompany.co.nz/>

JULIETTE FLORIST  
<https://www.julietteflorist.co.nz/>

# CONTACT US

EMAIL US AT [MANAGER@DOCKSIDE.CO.NZ](mailto:MANAGER@DOCKSIDE.CO.NZ)  
TO MAKE AN APPOINTMENT WITH OUR IN  
HOUSE WEDDING PLANNER, WHO WILL GIVE  
YOU A TOUR OF OUR BEAUTIFUL BUILDING  
& DISCUSS HOW WE CAN HELP YOU PLAN  
THE WEDDING OF YOUR DREAMS!

---

# SPECIAL THANKS

WE WOULD LIKE TO EXTEND A SPECIAL THANK  
YOU TO OLIVIA MELHOP PHOTOGRAPHY  
FOR KINDLY ALLOWING US TO SHARE HER  
BEAUTIFUL IMAGERY FROM SUMMER & SHANE'S  
WEDDING. HER WORK CAPTURES THE  
ATMOSPHERE, EMOTION, AND DETAIL OF EACH  
CELEBRATION SO EFFORTLESSLY, AND WE'RE  
INCREDIBLY GRATEFUL TO SHOWCASE HER WORK.  
[HTTPS://WWW.OLIVIAMELHOP.COM/](https://www.oliviamelhop.com/)

